



# NEWMAP IMPACT

A Bi-annual newsletter of Nigeria Erosion and Watershed Management Project's (NEWMAP) Vol. 1 No.3

The Year 2019 will go down as one of the highs and perhaps the best in the history of Nigeria Erosion and Watershed Management Project (NEWMAP). The Project did not only become the best performing project in the entire world Bank Nigeria portfolio, but the best project in terms of innovation and results and the best project in disbursement IPR.

The Nigeria Portfolio Performance Award was organized

## NEWMAP Records Highs at World Bank Nigeria Portfolio Performance Award

by the World Bank in partnership with the Federal Ministry of Finance to recognize and honor outstanding performance from project implementation units of World Bank-supported projects at states and federal levels.

World Bank Country Director, Mr. Rachid Benmessaoud,

### Bags overall Best performing Project Award

- Best disbursing Project by volume,
- Best Project innovation and Results &
- Overall best performing project in the World Bank FY19 Nigeria Portfolio.



Partners:



Special Climate Change Fund (SCCF)







while using the occasion to inform of the end of his work tenure in the country said that “what we have seen in this maiden edition of the Nigeria portfolio performance award, is the passion to deliver by project Teams.”

He enjoined all the Awardees that “the Awards and recognition is a call for more service to humanity. “Our roles is to be the voice of every Nigerian child so that they can benefit in all that is endowed in this great country,” he added.”

Speaking at the event Mr. Aliyu, Director IER Ministry of finance, said, “the award is a call for more work.” He applauded NEWMAP and other projects within the portfolio and reiterated the Ministry’s commitment to the World Bank in building an enabling environment to manage its portfolio in Nigeria

The World Bank had more than 30 operational projects ongoing in the country. While the bank’s net commitment to Nigeria over the years is about 11 billion dollars. These projects cut across health, education, agriculture, social protection, energy, infrastructure, and governance among others in the 36 states of Nigeria, including the Federal Capital Territory (FCT).

According to Benmesaoud there is a great knowledge sharing bringing all the projects together into an award ceremony. This has helped to recognize all of the good works that all of them are doing and recognize those that have done something special that others can replicate.

“There is a lot of learning that we are emphasizing in our engagements, states have

to learn from each other and that is what we would like to create, the space where the states can learn from each other,” he said.

Speaking at the ceremony, Salisu Dahiru, NEWMAP National Project Coordinator, said “this award is a pointer to Team work, best practices, and adequate stakeholders support.” He said, the project has surpassed all its targets. “The achievements in its short existence are significantly evident across all project components.”

Mike Ivenso Anambra State Coordinator, and John Adisa, former Edo state NEWMAP project Coordinator both acknowledged the positive impacts of NEWMAP in Civil works, bio remediation and alternative livelihood programmes. According to them, the overall best award to NEWMAP “is well-deserved and a testimony of effective leadership both at the National and States levels.

Earlier, in July 2019 NEWMAP had been awarded the Sustainable Development (SD) 2019 FY Awards in view of its innovation and transformational approach to sustainable land management in Nigeria. The sustainable Development Africa award was organized by the World Bank Headquarters in DC and coordinated by two Directors, Simeon K. Ehui and Ede Jorge Ijjasz-Vasquez. A total of eight selected World Bank-assisted projects in Africa participated in the July competition.





## NEWMAP rehabilitates 1,558.62 hectares (ha) of degraded land: lifts more than 8,000 people out of poverty

In less than 7 years of implementation, the Nigeria Erosion and Watershed Management Project (NEWMAP) in about 70 active gully erosion sites across the country, with over 1,558.62 hectares of degraded land reclaimed across the project states. NEWMAP has exceeded its initial target of reclaiming 30 sites in seven states at the commencement of the Project in 2013, with additional 48 sites approved for inter-

vention in mid-2018.

“The project In the last four years has successfully rehabilitated over 1,558.62 hectares (ha) of degraded land and lifted more than 8,000 people out of poverty through livelihood enhancement activities in drought-prone areas.”

“This is no mean achievement,” stated Salisu Dahiru NEWMAP National Project Coordinator. “This feat was able to be achieved through

the unrelenting Team spirit of the entire workforce.”

“The project supported over 5,159 beneficiaries via grants. The people are now engaged in businesses such as livestock farming, small shops, trading, and honey production,” he said.

Dr. Maria Sarraf, World Bank Practice Manager, Environment and Natural Resources Management, could not agree less while on her first mission to Nigeria, For a project that

### Editorial Team

#### Chairman

Salisu Dahiru

#### Editor

Adebayo Thomas

#### Contributors

Joseph Idoko  
Dan Aigbavboa  
Affiong Ani  
Emeka Achebe  
Jane Ozuruoke  
Victor Eziga

All correspondence to: the Editor, NEWMAP IMPACT NEWS, 56, Mamman Nasir Street, Off T.Y. Danjuma, Asokoro, Abuja. Tel: +2348037863662

Email: [fpmu@newmap.gov.ng](mailto:fpmu@newmap.gov.ng) web: [newmap.gov.ng](http://newmap.gov.ng)

was actually billed to cover 11 states in its lifetime and now scaled up to 22 states, the array of progress is very encouraging and the Project is a success,” she said

“Looking at the results recorded by NEWMAP in all of these difficult and severe erosion sites, the issue is not the number of sites we reclaimed but the critical gullies that we were able to handle and reclaimed.” The idea is not for us to deal with all the gullies but to demonstrate how they can be sustainably done using the best technics and methodology that will give value for money and cost effectiveness”.

And to ensure sustainability, NEWMAP established soil and water conservation zones where communities

would directly contribute to reducing erosion while conserving biodiversity and supporting sustainable forest management.

Land restoration has been of prime-most importance to the Project said Mike Ivenso NEWMAP Anambra State Coordinator. “Some of these gullies can be as deep as 100 metres and as wide as 20 to 30 metres and could stretch over several kilometers. “We consider these as end results of prolonged land degradation, resulted mainly from the loss of vegetation cover and leading in loss of livelihood because majority of population is in and around the area where these gullies exist.”

According to Ivenso, “going by the success rate of the project and the efforts of

both Federal Government and other critical stakeholders the Executive Directors of the World Bank Group (WBG) on 27th June, 2018 approved an Additional

Financing (AF) of \$400 million (\$300 from IDA 18 and \$100 million (equiv.) from IDA 18 Scale-up Facility) as Additional Financing to the NEWMAP project.”

He noted that the AF will be used to scale up investments in gully restoration, integrated watershed management and supporting livelihoods consistent with sustainable land management practices. “The AF will continue to support the Government in building its resilience to climate change and contribute to its NDC’s targets. Part of the AF will also be used to develop opportunities for future watershed and landscape management support in arid and semi-arid northern Nigeria,” he stressed





# Federal Government of Nigeria Green Bond Series II oversubscribed

As the country prepares for the Third Series of its Green Bonds the Federal Government of Nigeria through the Federal Ministry of Environment recently announced that its second green bond has been oversubscribed by more than 2x. The FGN launched its pilot green bond in December of 2017 for N10.69b to fund themes in its NDCs. This represents part of its commitment to the Paris agreement and as a signatory to the Helsinki Principles, in ensuring a stronger linkage between public finance and climate action.

This green bond is the second series to be issued by an African Sovereign, the first also attributed to Nigeria. The FGN green bond program is a partnership between the Ministry of Finance and the Ministry of Environ-

ment. It receives technical support from the World Bank through its Nigeria Erosion Watershed Management Program (NEWMAP) warehoused within the Ministry of Environment and Department for International Development (DfID).

In December 2017, Nigeria became the first African country to issue a climate bond certified sovereign green bond, and world's fourth sovereign issuer of green bonds. Its N10.69 billion Sovereign Green Bond



issued on December 18, 2017, was “the world’s first fully-certified sovereign green bond,” said Amina Mohammed, UN Deputy Secretary-General.

This second issuance conducted by the Debt Management office was to the tune of 15 billion Naira. This was made possible with the financial and technical support by the World Bank funded Nigeria Erosion and Watershed Management Project (NEWMAP) as well as the Federal Ministry of Environment, Department of Climate change(DCC)

Ms Mohammed, who was Nigeria’s immediate past minister of environment, now UN chief said Nigeria came to launch its first green bond as an innovative financing tool to tackle the country’s intersecting economic, social, environmental, and security challenges. “It is in fact the world’s first, fully-certified, sovereign green bond.”

“Most directly, the green bond offered a new source of funds, front-loaded, to



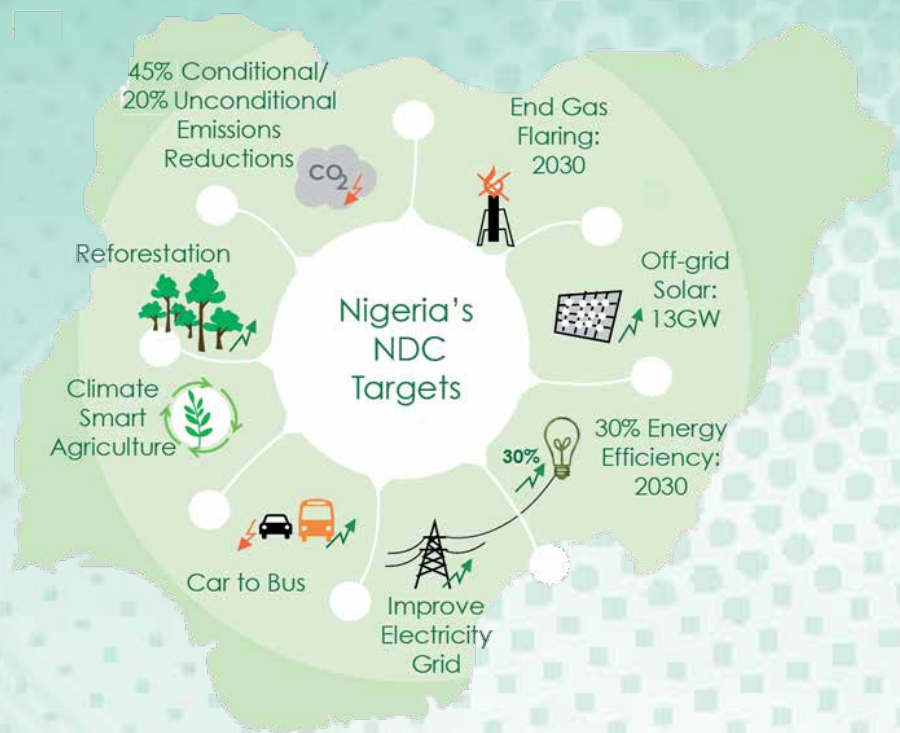
Pix: Stock Exchange and DMO Officials and former Minister of State Environment at the first issuance of the Nigeria Green Bond series

Pix: courtesy NSE



spend at the nexus between environmental protection, enterprise development (especially those that are women led) and Nigeria’s broader strategy of reducing its dependency on a fossil fuel intensive economy and contributing to its commitment in the Paris Agreement,” she added.

The green bond series II was issued for N15b to fund three themes in its NDCs, renewables, sustainable forest management and clean transport. This issuance also resulted in an expanded pool of ministries departments and agencies participating, from 2 in the pilot to 6 in this second green bond. The green bond is expected to be priced at 14.5% for a tenor of 7 years. For Ibukun Oduote Permanent Secretary



Ministry of Environment, “this green bond not only reinforces the federal government’s commitment to addressing climate change but also in funding components of its National Development Plan

that overlap with the NDCs and contribute to economic growth.”

The Federal Government of Nigeria launched its National Development plan, the Economic Recovery and Growth Plan (ERGP) in 2016. Program 47 of the ERGP has the objective of regular issuance of green bonds to address climate related issues. And to realize the objective, a green bond advisory group which is made up of public and private sector representatives, development partners (World Bank, IFC and African Development Bank) as well as Capital Market Operators.

Ms. Patience Oniha, Director General, Debt Management Office reiterated that, “DMO is committed to ensuring that the FG is able to raise resources through financial instruments that meet the expectations of the global climate community and compliment the FGs cost



NEWMAP/Nigeria Green Bond Financed Mini Grid in Torankawa, Sokoto State



of borrowing. This second green bond issuance builds on the experience from the first bond, giving us confidence to do more”

Similar to the first green bond the rating agency Moody’s completed an assessment of the green bond using its Green Bond Assessment which is based on the International Capital Market Association’s Green Bond Principles (GBP). The series 2 bond was assigned GB1 (excellent), the highest level in its ranking.

Salisu Dahiru believes the process of developing and then issuing a green bond provided the opportunity for cross sector collaboration within government, opening partnerships and bringing awareness within the private financial community, including key capital market actors, of the opportunities that green investment present, concluding that, “the Nigeria’s issuance



Pix: courtesy/NSE

The VP Prof Yemi Osinbajo with Former Ministers of Environment /Power at the at the 1st issuance

of the Green bonds series was part of many efforts by the World BANK, NEWMAP and other relevant MDAs directed towards meeting the country’s Paris Agreement on Climate Change’s Nationally Determined Contributions put at N142 billion by 2030

Dr. Peter Tarfa, Director Department of Climate Change said, “the continued issuance of green bonds enables the FGN to assemble a portfolio of climate interventions that

can be used to aggregate emissions information for state and non-state actors as part of fulfilling our reporting obligations to the global climate community.”

Obi Ugochuku, Adviser Climate Finance, Ministry of Environment explained that, “this green bond provides a new financial instrument for the Nigeria capital market, allowing investors to diversify their portfolios while providing resources to address the issue of climate change.’



Stakeholders on Environment and Climate Actions



## NEWMAP begins intervention in Urualla: “It’s A New Era Of Partnership” – Ihedioha

**G**overnor of Imo State Rt. Hon Emeka Ihedioha recently flagged – off implementation activities to address the Umuomeji, Umuturu, Ezemazu, Urualla gully erosion site with a ground breaking ceremony, held at Urualla in Ideato North Local Government Area (LGA) of the State.

Describing the devastating damage to large areas of ancestral lands and homes that have been ravaged and are being lost, and the possible loss that is bound to still occur if the erosion is not controlled. Ihedioha said this was why his administration “within its short lifespan approved the sum of #500 million Counterpart fund to ensure work commenced in

earnest to address the psychological trauma and economic losses resulting from the devastating effect of Umuomeji, Umuturu, Ezemazu, Urualla gully erosion site,” which he stressed cannot be over-emphasized. The governor therefore challenged the contractors to work according to approved design, while he called on the cooperation of the community.

“This is a new era in Imo state, and we intend to ensure that to a greater level, we tackle most environmental challenges confronting the state. This is why we are partnering with the Nigeria Erosion and watershed management Project (NEWMAP), Federal Ministry of Environment and



Gov. Ihedioha rolls out the Tractors as NEWMAP commences rehabilitation of Urualla gully area

the World Bank, Nigeria Country office to ensure that we restore back the resource base of the state.”

While he acknowledged the success of the NEWMAP in the area of tackling Land degradation Rt. Hon. Ihedioha solicited NEWMAP and the World Bank support for an emergency action in tackling the issue of Urban Stormwater in the state

In the same vein National Project Coordinator Salisu Dahiru said the partnership, and the new collaboration extended by Government of Imo State was a bold step towards finding a lasting solution to the dehumanizing erosion problem in the State through the intervention of prioritized gully erosion sites.

He noted that the Umuomeji, Umuturu, Ezemazu, Urualla Gully Erosion Site in Urualla, Ideato North LGA of Imo State is one of the state’s prioritized gully erosion sites



Governor Ihedioha and NEWMAP National Coordinator discuss on the way forward





targeted for intervention early in 2016, but for some unforeseen issues implementation process was truncated until recent events

Salisu who spoke on behalf of the Project and donor partners said the project “is aimed at the minimization of flood activities, rehabilitating and control of the gully from further expansion, rehabilitation of degraded lands (Flood Affected Lands) and their conversion into productive land as well as manage the watershed to redress the factors promoting gullying in the area. According to him, public consultation reveals that Umuomeji-Umuturu, Ezeama, Urualla gully site in Urualla has led to destruction of farms, destruction of building and ancestral home, threats to the safety of all residents of all ages especially children and the aged persons/elders and massive damage to lives and property especially during epic of wet season.

However, the community has made several efforts in the past at controlling Umuomeji-Umuturu, Ezeama, Urualla gully from expanding but the

magnitude of the required rehabilitation activities is beyond the capacity of the community. The communities, however, expressed their readiness to corporate and work with Imo-NEWMAP in ensuring sustainable development of the Umuomeji-Umuturu, Ezeama, Urualla gully watershed.

The EzemazuUrualla Gully Erosion can be traced back to the early 1980s, when the construction of the Urualla (Afri-bank to Umuturu) drainage was awarded and carried out. The drainage, which was designed to carry runoff generated from other neighbouring communities (Osina and Akokwa) through Umuturu down to Agwura Stream and Urashi River, was abruptly terminated. Due to the abrupt termination of the channel, the runoff generated within these areas resulted in the scouring of the unprotected soil that resulted in rill erosion. Consequently, the resultant sediment was transported into the Agwura and Urashi Stream. The slope of the gully area together with the nature, characteristics of the incipient soil and man-made interferences

are the main causes of the gullies of the area. The topography of Umuomeji-Umuturu, Ezeama, Urualla gully site is characterized by the following:

- A sloping land of about 5 to 8 % from north to center of the main Urualla gully;
- A sloping land of 4 to 6 % from south to the center of the main Urualla gully; and
- A sloping land of about 3 % from east to west.

Hydrological/Engineering studies showed that the total watershed area of the gully site is about 468.38ha. This area is shared amongst catchment 1, catchment 2 (Gully 1) and catchment 3 (Gully 2) respectively. The proposed intervention will restore the socioeconomic lives of the people. Access to community facilities and infrastructures will be enhanced while the entire ecological landscape including stream flow will be restored and re-designed. Above all, through all these, the sustainability of the environment will be enhanced.





NEWMAP installed Automated Early Warning System in Oron



Construction of massive drains to support Ebonyi state Urban stormwater management



Abakaliki Urban Stormwater Management drains construction



Abakaliki stormwater situation before NEWMAP intervention



World Bank and European Bank officials visit to Edo State Govt.



NEWMAP intervention at Ekwueme Square Awka Anambra State





Gov. Ugwuanyi Commissioning the NEWMAP rehabilitated sites: Ajali Water Works and Nite Mile in Enugu



NEWMAP tree seedlings and Nusery in Kano



Project Success TTL, NPC and FAO(Yessuf) pose to identify with the ongoing NEWMAP succesful intervention in Abakaliki Urban Stormwater Management



Anambra State Project Coordinator explains NEWMAP approach to addressing the Gully situation in Ekwueme Square Awka



Ajali Water works NEWMAP intervention site Before (left) and after intervention (right)





## Focus on Cross River State Nigeria Erosion and Watershed Management Project (CRS-NEWMAP)

are completed and ready for commissioning, while Lemna Agric one of the newest intervention site has just been completed.

“With the wonderful support of the State Governor and the political backing the project enjoys, work has been completed at Atakpa, Ikot Anwatim, Nyagasang, Ikot Ekpo, and Edim Otop which were the first five priority sites. Two more sites of Ikot Nkebre and Lemna/Federal Agric were approved and work has been completed at Lemna/Federal Agric while Ikot Nkebre is on-going,” he said.

New sites have been approved for the State and the designs are ready, Call for Bids were advertised and prospective contractors have submitted bids for the

new sites, of Ikot Uduak, Ikot Effanga Mkpa, Edim Otop 11, Itate in Yala and Igaba in Obudu Local Government Areas. Currently evaluation of the submitted bids is ongoing.

The project has positively affected peoples' lives hence more communities are writing to be part of the project owing to the enormous benefits that have accrued to other project beneficiaries. Most of the beneficiaries that were paid compensation whose houses were affected have built new structures from the monies they were paid and some have relocated to safer areas. The project also implemented the Livelihood enhancement programme where selected members (about 415 persons) of the affected communities were trained on various trades.

**C**ross River State is one of the old seven participating states in the Nigeria Erosion and Watershed Management Project (NEWMAP). With the support of the State government, the project was successfully launched September, 2014 by the Former Governor of the State, Senator Liyel imoke.

CRS-NEWMAP being one of the first seven pioneer states had five priority sites namely: Ikot Ekpo, ikot Anwatim, Nyagasang, Edim Otop gully erosion sites in Calabar Municipality and Atakpa gully erosion site in Calabar South LGA.

Speaking on achievements of the Project in the state, the Cross River state project Coordinator, Dr. Fidelis Anukwa said NEWMAP invested over N2.1billion on the first five project sites in the State. According to Dr. Anukwa, four of the initial five sites, Edim otop, Ikot Anwatim, Ikot-Ekpo and Nyagasang,



Project Beneficiary whose house was affected by gully erosion and was paid compensation



The new house he built after the compensation was paid by NEWMAP



## Gombe NEWMAP Launch Tree planting Campaign with over 1000 seedlings

**D**esertification is one degraded element that affects the lives and livelihoods of many Nigeria's especially in the arid and semi-arid zones. This was why recently Gombe NEWMAP embarked on the drive to end desertification with a tree planting campaign.

Over 1,000 seedlings were distributed to individuals for planting while launching a tree planting campaign at Jauro-Abare. The Project Coordinator, Gombe state

NEWMAP, Engr. Mohammed Garba said "NEWMAP has so far planting 86,000 assorted seedlings in 9 local government areas of the state under its degraded land rehabilitation programme as part of measures to prevent soil erosion and general environmental degradation".



Gombe PC, Engr. Mohammed Garba, FNATE (m) during the tree planting campaign



Community members with young plant given by NEWMAP's Focal NGO for planting



## NEWMAP Launched in Katsina- the Partnership with NEWMAP had lifted Katsina State's burden -Say Gov. Masari

**G**overnor Bello Masari has urged NEWMAP to deploy innovative erosion control techniques and robust integration of flexible structures to tackle the menace of gully erosion in the state. He stated this recently at the launch of the Project in the state.

The World Bank Country Director, Rachid Benmessaqud, at the launch recently in Katsina, said the rationale for the project was to alleviate the dangers of flooding by providing drainage and managing flood risks in the state.

Benmessaqud, represented by the Project Team Leader, Dr. Amos Abu, said the NEWMAP intervention programme would also make efforts to avoid damage caused by erosion by controlling run-off and preventing pollution and retaining natural systems.

He said: "Under the project, the World Bank is contributing \$5 million to address the problem of gully erosion in the state via the provision of drainages and other water channels that will curtail the menace in the affected com-

munities." Benmessaqud said NEWMAP has chosen 106 sites across the 34 local government areas of the state, among several gully sites for the first phase of the intervention.

Governor Aminu Bello Masari said the partnership with NEWMAP has lifted his administration's burden, adding that government has paid N500 million as Counterpart Fund towards the control of flood, erosion in the state



Katsina Commissioner for Environment (middle) TTL and NPC NEWMAP on Inspection



# NEWMAP Tackles Erosion In Kogi State: Supports Multi-Billion Naira Erosion Works In Olamaboro and Okene LGA's



Gov. Bello with the Contract displaying site designs

tion in the state and other parts of the country are reduced to the barest minimum. The governor urged the contractors to mobilize to the site on time and deliver within the 15-month time frame provided for in the details of the contracts. The Kogi State NEWMAP Project Coordinator, Barrister Ladi Ahmed Jato, said this feat would not have been possible but for the governor's support. She said the Governor continues to show great concerns towards solving environment issues

**K**ogi Government and Nigeria Erosion and Watershed Management Project (NEWMAP) has signed –off on the implementation of the stabilization, reclamation and channeling of Adumu and Agassa erosion sites in Olamaboro and Okene local government areas. Governor Yahaya Bello, said this activity was to ensure a lasting solution to concerns of environmental degradation in the affected areas.

ensuring that environmental challenges are taken with utmost seriousness, Governor Bello commended NEWMAP for this multi-billion Naira intervention and the World Bank, for providing the required financial support towards ensuring that issues of environmental degrada-

tion in the state, that despite the dwindling allocation of the state, he released N900, 000 million counterpart fund to facilitate and fast track the Engineering Designs.

The projects under the supervision of NEWMAP was awarded to two firms namely NIGERPET Structures Limited and NAEL and BIN HARMAL NBHH / HARTLAND.

While he applauded the federal government for



4th right- Gov. Yahaya Bello of Kogi State with NEWMAP Team



## Nasarawa State Government to explore further partnership with NEWMAP in the area of Stormwater Management

The Nasarawa State Government has promised to swiftly tackle the menace of Erosion and Stormwater flow in the state. Governor Abdullahi Sule stated this in Lafia, capital of Nasarawa state when he received in audience the NEWMAP team and His Royal Highness the Emir of Nasarawa Emirate, former Minister of state Environment, Ibrahim Usman Jibril.

Engineer Sule noted that in recent past and during this rainy season majority of the people experiences

various forms of hardship with regards to flood related issues. He therefore called on NEWMAP to help with issues of land degradation in the state.

Speaking earlier, His Royal Highness, Ibrahim Usman Jibril said his visit to support and encourage the governor in piloting the affairs of the state. He lamented the pressure on the land as a result of the incessant flooding in the state. He also noted that most of the flood related issues was as a result of wrongly terminated drains.

He therefore supported the state Governors call for immediate intervention of NEWMAP in the area of Stormwater master plan.

National Project Coordinator Salisu Dahiru said the partnership and the collaboration with the Nasarawa state government was a bold step towards finding lasting solution to the dehumanizing erosion problems in the State, through NEWMAP intervention in prioritized erosion sites in Lafia, Doma, Keffi, Toto and Nasarawa.



From Left Emir of Nasarawa (and Former Minister of Environment) Usman Jibril and Nasarawa State Governor(Middle)exchange greetings with Salisu Dahiru NEWMAP National Coordinator



# Sokoto and Kano-NEWMAP Rehabilitates Degraded Lands

In an effort to address Gully Erosion completely in Sokoto state, the Sokoto NEWMAP has established a Tree Nursery housing over one million seedlings of different species. The project also has successfully rehabilitated about three hundred hectares of degraded lands in some of its intervention sites in the first phase of project implementation. Sokoto Newmap

Project Coordinator said 100 hectares of land were planted with trees near Lugu Dam to prevent siltation of the Dam and Wurno irrigation scheme, another 100 hectares of land were planted with trees in Gundumi Forest Reserve as enrichment planting as well as another 100 hectares of Orchard were established for Farmers in the project intervention areas.

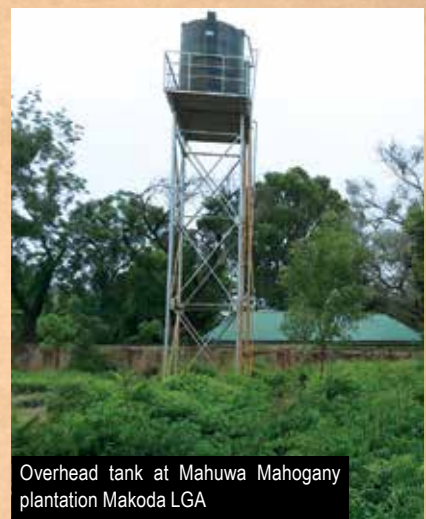
KANO-NEWMAP in complementing the Project's Development Objective (PDO), launched Degraded Land Rehabilitation Scheme in 2017 targeting 100ha of degraded land. This was part of efforts to address the States' unique dry land challenges especially across the twelve (12) front-line local government areas identified to be more prone to erosion and desert encroachment. Significantly this would have a long-term social and economic benefits to local communities in and around the state with improved livelihoods and food security



Before



After



Overhead tank at Mahuwa Mahogany plantation Makoda LGA







## FAO Seeks Govt Policies To Make African Farmers Climate-Resilient

**A**fter a high-level Africa Food Security Leadership Dialogue in Kigali, the Rwandan capital, the FAO in a statement on Tuesday, August 6, 2019 noted that building resilience was one of its priorities in Africa and that it was key to meeting the challenge of feeding over two billion people by 2050. It therefore recommended national policies to make farmers climate resilient.

“Small-scale food producers and their families are particularly vulnerable to the negative impacts of climate change, but they have always been innovators. What they need are policies that protect them and increase their resilience to climate change. They need access to information, technology and investment, and they should be brought to the conversation on innovation,” FAO quoted its Deputy Director-General, Helen Semedo, as telling the conference.

The forum aimed at engaging governments and key development partners to bring about unified action for Africa’s agriculture and food systems in response to climate change, according to FAO. “The two-day event was hosted by the Government of Rwanda, in partnership with the FAO, the African Union Commission, the African Development Bank, the international Fund for Agricultural Development and the World Bank.”



## IRENA, UNFCCC Seek To Accelerate Renewables As Climate Solution

**T**he International Renewable Energy Agency (IRENA) and UN Climate Change (UNFCCC) are jointly ramping up efforts to fight climate change by promoting the widespread adoption and sustainable use of renewable energy. The new strategic partnership builds on a long history of cooperation that aims to ensure a low-carbon climate-resilient world in line with the Sustainable Development Goals and the Paris Agreement.

In a Memorandum of Understanding signed in Bonn, Germany between the heads of IRENA and UN Climate Change, the two organisations have agreed to step up the exchange of knowledge on the energy transition, collaborate more closely at expert meetings, increase capacity building to promote renewables and undertake joint outreach activities.

Patricia Espinosa, UNFCCC Executive Secretary, said: “The rapid transition to clean energy is crucial to meet the central goal of the Paris Climate Change Agreement, which is to hold the global average temperature rise to as close as possible to 1.5 degrees Celsius.



# NEWMAP Holds GBV Retrofitting Workshop

A 4 day Gender Based Violence (GBV) retrofitting workshop for the Nigeria Erosion and Watershed Management Project (NEWMAP) held recently with all the 21 partner states in attendance. The NEWMAP's GBV clinic and retrofitting was initially scheduled for May 27 – 31, however given the volume of expected participation from NEWMAP, the GBV workshop was moved to Abuja as a central location to accommodate all Participants.

The World Bank Group considers that no Country, community, or economy can achieve its potential or meet the challenges of the 21st century without the full and equal participation of women and men, girls and boys. Therefore it is committed to closing the gaps between males and females globally

for lasting impact in tackling poverty and driving sustainable economic growth that benefits all.

The World Bank today released an Action Plan outlining administrative and operational measures being undertaken to help prevent and respond appropriately to incidences of sexual exploitation and abuse, as well as other forms of gender-based violence (GBV) in World Bank supported projects. This is because 35 % of women worldwide have experienced either non-partner sexual violence or physical and /or sexual intimate partner violence (IPV) WHO 2013. It is also agreed that projects with huge civil works can increase the risk of GBV in both public and private spaces by a range of perpetrators In a number of the following ways: a) Projects

with a large influx of workers may increase the demand for sex work or even increase the demand for trafficking of women for the purposes of sex work; b) such big projects creates shifts in the power dynamics between community members and within households; c)when land redistribution occurs; d) when there are little job opportunities compare to the numbers of those seeking the opportunities.

The World Bank Action Plan addresses the recommendations of the Global GBV Task Force released in August to strengthen the World Bank's capacity to identify, prevent and mitigate against GBV in World Bank supported projects. In its report, the GBV Task Force underlined that preventing sexual exploitation and abuse (SEA) requires collaboration and action across different groups including contractors, government partners and communities, as well as the World Bank.



Salisu Dahiru National Coordinator NEWMAP and Federal Project Management Team (FPMU) at the Workshop



# Testimonies From Few Project Beneficiaries

In the South –East the project approach include a strategic combination of civil engineering, vegetative land management and other catchment protection measures, and community-led adaptive livelihood initiatives

In the North the Project is helping to stem deforestation and regenerate the ecosystem towards sustainable environment: For instance, the establishment of woodlot/orchard plantation in Poshereng, Kaltungo, Shongom and Labeke in Gombe state:



**Barr. Eni Afanajah Adeghebalulu is the Chairman, Site Committee, and Ibore Gully Site:**

“Generally, NEWMAP came to our community to do wonders for the benefit of mankind. We of Ibore Community are glad indeed. The Ibore gully has a very long history and the flood took many lives and numerous properties, houses inclusive. Several people relocated to different places hopelessly.”

“The initial impression when NEWMAP came into our community was that NEWMAP is a body created by Edo State Government for mere political propaganda. We were looking at them like others who used to come to take advantage of the gully problems to dubiously embezzle money from the Federal Government. So, the impression was that they have come to do their fake documentations again. Today, the impression now is that NEWMAP is a personification of sincerity. The gully erosion challenge has been treated and part of the road taken by the gully erosion is being restored. NEWMAP has done what we thought was impossible!”

The impact of this intervention by NEWMAP has shown that governments can do things that look most impossible. The intervention has shown that sincere organizations like NEWMAP can heal several injuries instituted by nature on mankind dwelling places.



**Mrs. Roseline Okhale is a Patent Medicine Shop Owner and a beneficiary**

“NEWMAP it is good. What NEWMAP has done in Ibore, Edo state is a very good job. My husband used to carry empty bags of cement to put sands on parts of the road damaged by flood erosion.” Now, with NEWMAP intervention in Ibore Community, I am happy. My husband is also happy and no longer worry about erosion again. People are now hopefully relocating to their ancestral lands, building beautiful houses and enlarging their farms. The intervention.



**Mr. Peter Omohan** is a local farmer and a beneficiary in Auchi “For me I just did not believe everything will be ok like this now.” “Before NEWMAP intervention our Community was devastated by gully erosion and was in a bad shape. It was not good at all. Houses and livestock’s were destroyed. Community members and other neighboring communities became separated by the Gully. We wrote several petitions to Federal and the state governments (Abuja, Benin.). We in this Community feel very happy, we are all happy with the work of NEWMAP.”



**“We are most grateful. NEWMAP has really added value to our lives.”**

“I’m Buba Alfayo Yusufu, the District Head of Shongom. NEWMAP has done so much in my community, excellently so well in terms of woodlot plantation. The community is so much appreciative of the project.

The only challenge we are having is the issue of water due to the low water table. But, we have been informed that efforts are being made by the project and Gombe state government to ensure we have water in abundance.